

O P T I M I S A T I O N

COMFORT UNIT
↑



COADIS LINE

Coanda effect cassette

COMFORT AND DESIGN
IN PERFECT HARMONY



NA12.21 E

• E N E R G Y
• A I R Q U A L I T Y
• C O M F O R T

New comfort unit



Coadis Line

Performance - Comfort - Design

Both sleek and efficient, the innovative Coadis Line meets the most demanding heating and cooling needs while ensuring optimal indoor air quality for occupants of tertiary buildings.

The benefits



OFFICES



SHOPPING CENTRES



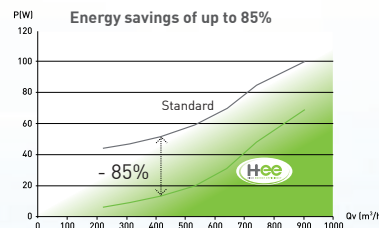
- Highly responsive system to quickly obtain the desired comfort level.
- Diffusion by Coanda effect across 180° or 360° for perfect control of thermal and air phenomena which cause discomfort.
- Epure function for optimal indoor air quality.
- Energy optimisation:
 - ✓ High Energy Efficiency (HEE) motor.
 - ✓ Optimised hydraulic coil with low pressure drop.
- Optimised acoustic comfort thanks to variable-speed motor.
- Excellent accessibility for simplified maintenance.
- Flexiway system for greater modularity.
(Visual interchangeable 180° or 360° diffuser)
- Modern, elegant design to ensure perfect integration in suspended ceiling.
- Ecodesigned product for a reduced environmental impact.

TECHNOFOCUS

High Energy Efficiency performance



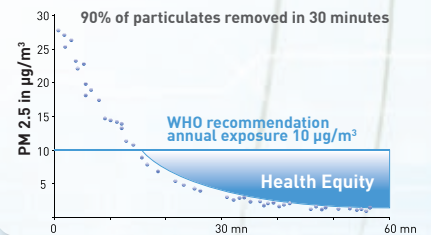
In order to promote energy efficiency in buildings, Coadis Line is equipped with an HEE motor which reduces the unit's electricity consumption by up to 85%.



Air quality



In order to safeguard occupants' health, Coadis Line incorporates Epure technology to guarantee excellent indoor air quality. This filtration reduces the concentration of PM 2.5 particles suspended in the air to below the limit recommended by the WHO (10 µg/m³).



Energy and Ecodesign performance



	2 Tubes		4 Tubes	
	Cooling	Heating	Cooling	Heating
CDL600	1 to 5.1 kW	1.6 to 5.9 kW	1.1 to 4.3 kW	2 to 3.9 kW
CDL900	2.7 to 9.3 kW	4.6 to 11.2 kW	2.7 to 9.3 kW	2.9 to 5.7 kW

2-Tube system:

Summer: Cold water inlet 7/12°C, Air 27°C, WB 19°C
 Winter: hot water inlet 50°C, air 20°C,
 water flow rate identical to summer mode.

4-Tube system:

Summer: Cold water inlet 7/12°C, Air 27°C, WB 19°C.
 Winter: hot water inlet 50/60°C, air 20°C.



Comfort Line has been fully ecodesigned and is part of CIAT's sustainable development policy

- Choice of suppliers located close to the production plant.
- 90% recyclability rate.
- Gain of 13% on the LCA.
- Since 2013, CIAT has been in partnership with ECOLOGIC for the collection and recovery of waste from our appliances at end of life, subject to the WEEE directive



Coadis Line 600

Customise your spaces



OFFICES

Designed for offices, open plan areas and meeting rooms, the Coadis 600 meets all the requirements of the office sector.



CIAT has created the Flexiway concept to cater for all types of space, their modular characteristics and future developments.

The Coadis Line's single-slot 180- or 360-way diffusion on the same type of frame means it can be installed in both partitioned offices and open spaces.



VISUAL 180°

for partitioned spaces from 10 to 20 m² with the unit facing the windows.



VISUAL 360°

for open spaces with the unit positioned centrally.

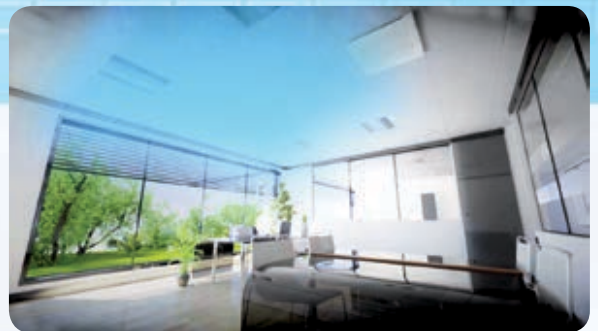
Anti-cold shower system

The Visual 180° incorporates the anti-cold shower system patented by CIAT (file no. 1451872) and specially designed by our R&I centre. It enables the air stream from the side channels to be adjusted without changing the settings and without fully blocking the air passage cross section, which is a source of additional noise and power loss. When the units are placed side by side in the same room, the air jets are no longer in opposition, to prevent cool air from falling between two Coadis Line units.



Coanda comfort

The pioneer in Coanda diffusion systems, CIAT has taken the Coadis Line further by optimising it in accordance with standard EN ISO 7730. Occupants are in a comfort bubble from head to toe, protected from the uncomfortable thermal phenomena that can be caused by direct supply systems.



Coadis Line 900

Innovative design



SHOPPING CENTRES

Designed for offices, open plan areas and meeting rooms, the Coadis 600 meets all the requirements of the office sector.

CIAT has created the Flexiway concept to cater for all types of space, their modular characteristics and future developments. The Coadis Line's single-slot 180- or 360-way diffusion on the same type of frame means it can be installed in both partitioned offices and open spaces.



Specially designed for installation in commercial spaces

- Diffusion by Coanda effect (360° only) to prevent air from blowing directly onto occupants.
- Condensate drainage up to 1.20 m via a built-in controlled pump.
- Cover finish trim for plaster ceilings.
- Epure or G3 filtration.

Simplified maintenance

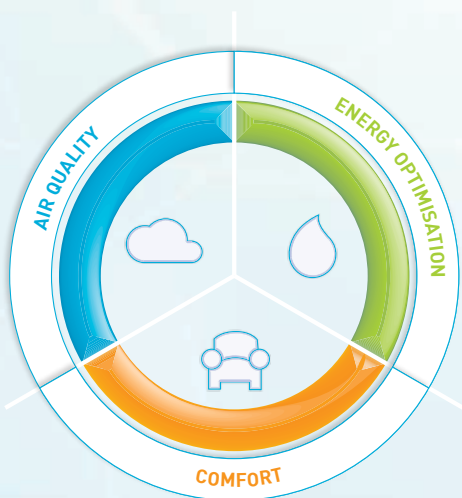
Quick opening filter holder grille mounted on retaining hinges for optimal freedom of movement during operations. Easy access to internal components (condensate pans, turbine, motor) from underneath for simplified maintenance.



Hydraulic connections equipped with flat-face swivel nut for direct installation of the valves on the coil. Large auxiliary recovery pan for valve condensate, with no water retention, supplied as standard. Optional self-balancing 2-way valve to optimise balancing of hydraulic networks.

Hysys[®], integration into the water loop system

Coadis Line is an integral part of the CIAT-designed Hysys[®] water loop system solutions. These solutions combine compatible equipment to provide comfort, indoor air quality and energy optimisation.



V3000 control



Intelligent control of the Hysys[®] system



Easy CIATControl enables managers or occupants to configure and control all Hysys[®] integrated equipment (up to 180 comfort units) easily and intuitively via its colour touch screen.

Easy CIATControl adapts effortlessly to redevelopments or the reorganisation of the building.

Smart CIATControl controls up to 3 water loops using a single touch screen. Smart CIATControl features scenarios for tracking consumption levels, measuring energy performance and managing maintenance. Smart CIATControl controls an installation via a computer, a tablet or a smartphone.

3 performance packs to select the best system solution

The major advantages of the Hysys[®] energy system complement each other according to the priorities of each project in terms of comfort, indoor air quality and energy optimisation. 3 progressive performance levels are possible:

Comfort pack ★★

Combines the benefits of the water loop with V30 controllers.

HEE comfort pack ★★★

Integrates high performance motors, certified V3000 controllers and centralised Easy CIATControl water loop control.

HEP comfort pack ★★★★★

In addition to HEE performances, HEP integrates IAQ functions including Epure and CO₂ management. The system's efficiency is continuously optimised by Smart CIATControl.





With almost 80 years' experience, more than 2000 employees, and 6 production plants including a vast industrial complex in the Rhône-Alpes region, CIAT has obtained ISO 14001 certification and is renowned as a major player in the HVAC industry.

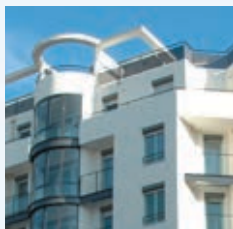


The CIAT Group: European leader in heating, cooling and indoor air quality

A complete range of comfort units



A few CIAT references



Palais Pharos
Lyon - France



Four Seasons Hotel
Saint Petersburg - Russia



Mas de Lauze
Accommodation for
Dependent Elderly
People Nîmes - France



Varyap
Istanbul - Turkey



Colindale
police station
London - United Kingdom



Avenue Jean Falconnier - 01350 - CULOZ - France
www.ciat.com